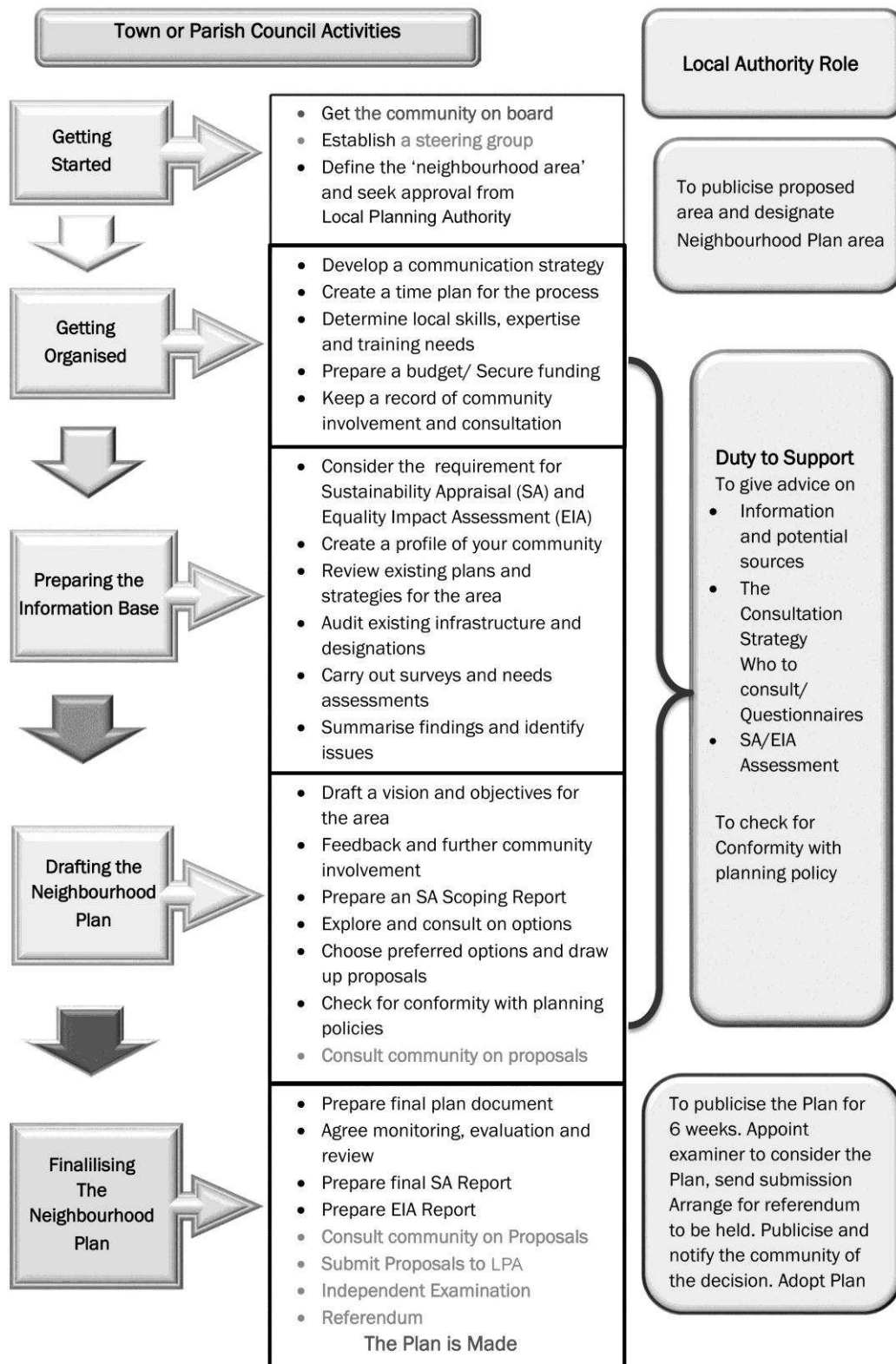


Annex 1 - Outline of the steps involved in producing a Neighbourhood Plan



Annex 2 – Submissions from Cliffsend Parish Council – Statement and Map

Cliffsend Parish Council

Cliffsend Parish Council, as a relevant body for the purposes of section 61G of the 1990 Act, hereby apply to carry out a Neighbourhood Plan for the village of Cliffsend, Near Ramsgate, Kent.

Cllr. Mrs V. Hovenden attended a training day on 25th July, 2012.

An initial Neighbourhood Plan Public meeting, for residents of Cliffsend, was held in Cliffsend Village Hall at 7.30 on Thursday 28th February, 2013. Explanation of the nature of a Neighbourhood Plan given by Cllr. V. Hovenden, Chairman of the meeting, followed by questions and discussions, and then the opportunity for attendees to place 'post its' on 'talking walls' to show the areas of the village and the nature of interest that they felt should be included in the Neighbourhood Plan.

In particular, Roads, Transport, Utilities, Housing, Public Open Spaces, Medical Provision and Children's' Activities were shown as areas of concern.

We have a sub-committee of five tasked with leading this work, and will be looking to engage with residents of Cliffsend and experts in various fields, to carry out this Plan.

This document is a description of the Cliffsend area. It describes the obvious boundaries of the area which we wish to include in our Neighbourhood Plan, and in which residents feel part of a village community.

The Country Park has been excluded from our Plan area as it is fully managed by The Kent Wildlife Trust.

General

Cliffsend is a village and [civil parish](#) situated almost 2 miles (3 km) west of [Ramsgate, Kent](#), United Kingdom, in the [Thanet](#) local government district.

The village is situated between the A299, the far end of the Thanet Way, and the A256, which meet at the Lord of the Manor roundabouts to the East of the village.

Boundaries

Cliffsend is a village with obvious boundaries of Manston Airport and the sea, the Golf Club, the Lord of the Manor road junction roundabouts and the Nature Reserve.

Manston Airport or 'Kent International Airport' is situated to the north of the village, with the East end of the runway preventing the village expanding northwards. However only a few commercial flights run from here, so noise is kept to a minimum, and there are no commercial night flights.

The Lord of the Manor roundabouts link Thanet with the new A299 Hengist Way (Canterbury / London), and the new A256 Ebbsfleet Way (Sandwich / Dover).

Pegwell Bay to the South of the village has many levels of environmental and nature protection and is of internationally important interest; the coast contains the Pegwell Bay Country Park and the remains of the Hoverport pad.

The Golf Club separates Cliffsend from the neighbouring parish of Minster.

History

[Hengist and Horsa](#) landed near here in 449AD, and [St Augustine](#) in 597.

Originally a farming community (there are three 'Cliffsend' Farms) there was rapid development in the 1960's and this has gradually continued to create approximately 800 mixed dwellings making the community today.

Manston airport was a prime target for German bombing during the Second World War, and Pegwell Bay was an obvious invasion site. Various anti-invasion measures were emplaced along the bay, and gun-emplacements in the village. Many "tank-traps" and some pillboxes are exposed along the Sandwich Road, and many more anti-tank barriers are still visible near the Country Park.

On permanent display on the cliff top at Pegwell Bay is a replica of the [Viking longship Hugin](#), which sailed from Denmark to Thanet in 1949 to celebrate the 1500th anniversary of the invasion of Britain, the traditional landing of the two men, and the betrothal of Hengist's daughter, Rowena, to King [Vortigen](#) of Kent. The Hugin was offered as a gift to Ramsgate and Broadstairs by the [Daily Mail](#) for preservation.

Cross channel hovercraft services from the Pegwell Bay Hoverport began in 1969 and finished in 1982. All the buildings were eventually completely demolished; however, the hovercraft pad, car marshalling area and approach road are all still clearly identifiable.

Manston Airport was a joint RAF base / civilian airport until 1999, when it became purely a commercial enterprise.

The original A299 Canterbury Road and the A256 Sandwich Road (the major routes into Thanet) both pass through the village, but were finally by-passed by the new East Kent Access Roads Project which opened in 2012. The new A299 Hengist Way cuts through the village under the railway via a multi-million pound tunnel.

Amenities

A railway line passes through the village at the Cliffsend level crossing, dividing the village into two (but there is no station). Traffic and pedestrians pass from one side of the railway to the other via a narrow lane. Virtually all of the village amenities are in the South side of the village.

The village has one petrol station on its south-side, on the A256, currently run by Jet. The station also acts as a local convenience store with a Pay Point.

The village has a local community-run convenience store (situated in an extension of the Village Hall) which also contains a local post-office. This post-office is strongly supported by local residents, and was the only post office to be saved from closure nationally during the closure scheme in 2008.

The community run Village Hall in the centre of the south side of the village in Foads Lane was built 1968. It has a capacity of 100 persons, and is available for hire for functions; it has a small car park behind it.

The Anglican parish church of St Mary is also in Foads Lane. Originally a Methodist church it was rented by the Church of England from the early 1930s, eventually being bought in 1956.

Both a garage service and a separate Oil Refinery service exist in private family run businesses on the old A299 in the North of the village.

The village has a local golf club, St Augustine's GC; the entrance is situated next to [St Augustine's Cross](#), which is situated less than quarter of a mile West of the village. It has a bar for those using the golfing facilities. It is also available for functions.

There is a single public house – The Sportsman Inn - which provides meals during the week lunch and evening periods, as well as over weekends. It is also available for functions.

Public open spaces

The Village Green - opposite the Village Hall and Shop / PO.

A Childrens Play Area - next to the Village Hall and leased by Thanet District Council.

The Marjorie Chapman Meadow - behind the Village Hall and leased to the village for recreational uses for 125 years.

Hugin Green - overlooking Pegwell Bay and owned by Thanet District Council). This is the site of the Viking Ship

The old Hoverport site which is very popular with dog-walkers.

Local Tourist Attractions

The village is the site of several local tourist attractions,

'The Viking Ship', which is a recently restored Viking Ship similar to that which landed on the site during the invasion. The ship sits on the cliff top, on a large expansion of open grass, which contains an ice cream shop and parking for visitors. This overlooks Pegwell Bay nature reserve. On a clear day, visitors can see a large expanse of east Kent to the West, Sandwich, Deal, and the northern tip of the French Coast. To the east, the cliffs curve round into the nearby town of Ramsgate.

The Pegwell Bay Country Park – on the area of a disused household waste tip – which is managed by Kent Wildlife Trust. This is also very popular with dog-walkers.

The Pegwell Bay cliffs are a famous geological site showing a very clear unconformity between the chalk deposits and much later sediments.

Pegwell Bay itself is an internationally renowned seabird overwintering site. It is also popular with kite surfers.

Transport

Residents have to travel out of the village for schools and doctor or dentist services.

Several businesses are run from homes.

In 2012 the East Kent Access Road scheme was opened, designed to take lorries and through traffic away from the village. Traffic Calming is currently being planned to ensure that this objective is met.

The New East Kent Access Road intersects the village at the same point as the railway line, though this is via a tunnel, so the effect on the village is minimal. Both the A299 and A256 have been replaced by this scheme, and will no longer be the main roads, though they will continue to serve the village.

There are limited buses serving the village, connecting to Ramsgate, Minster, Sandwich and Canterbury, but none run in the evenings or on Sundays.

Although the Canterbury to Ramsgate railway line runs through the village, there is no station, with the nearest stations being Minster (4 km) and Ramsgate (3 km).

Access from the new road to the village can be gained from the Lord of the Manor Thanet Intersection south on the old A256; from the Ebbfleets Roundabout and east along the old A256; from the Sevenscore roundabout along Cottington Link road; and at the Cliffsend roundabout heading east on the old A299.

Cliffsend Proposed Neighbourhood Plan Area

